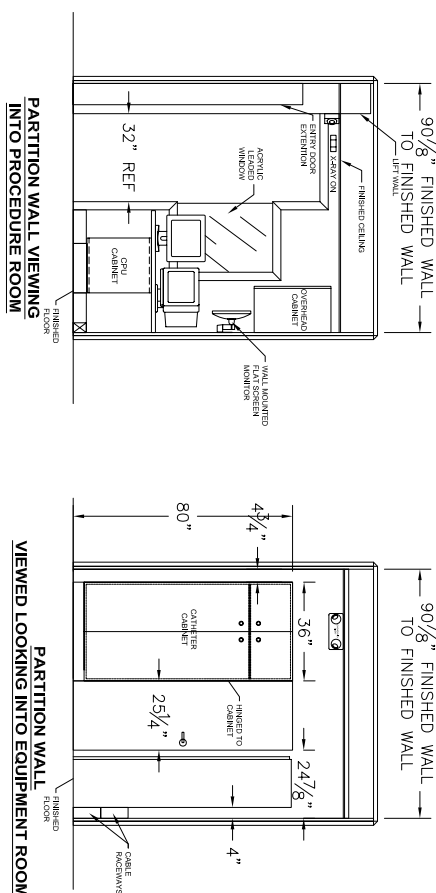
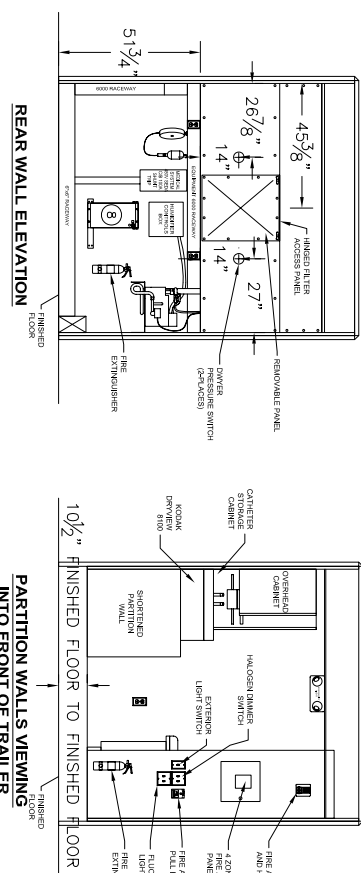
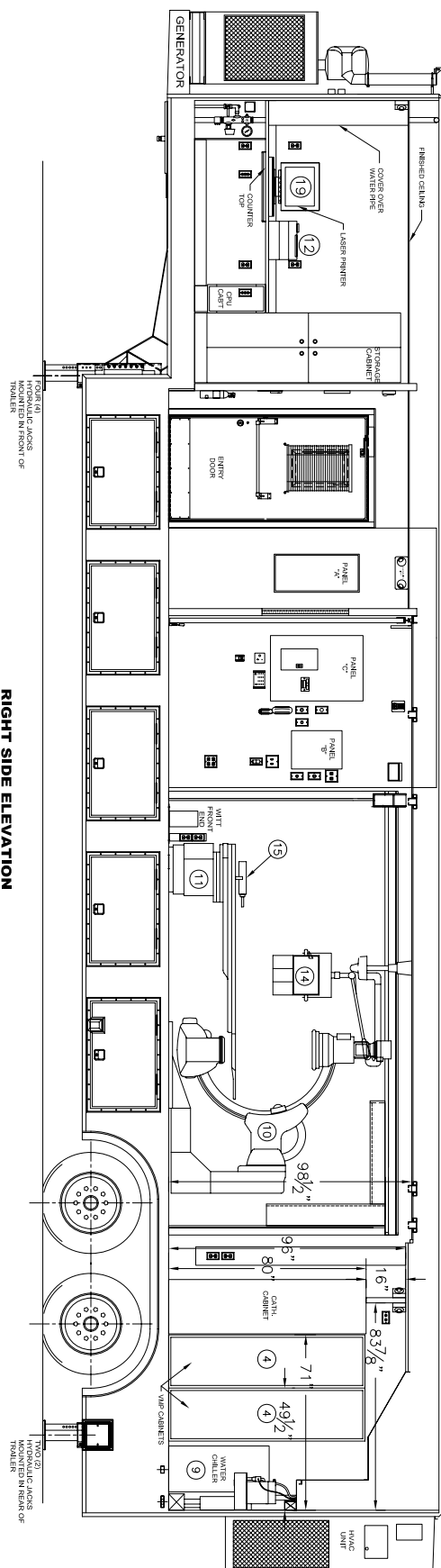
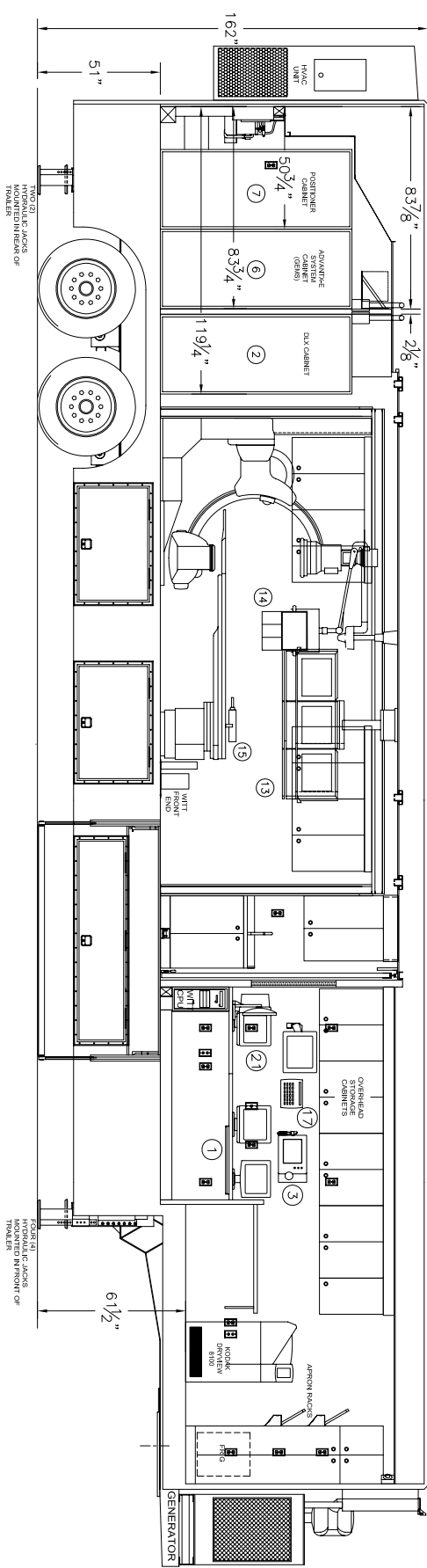
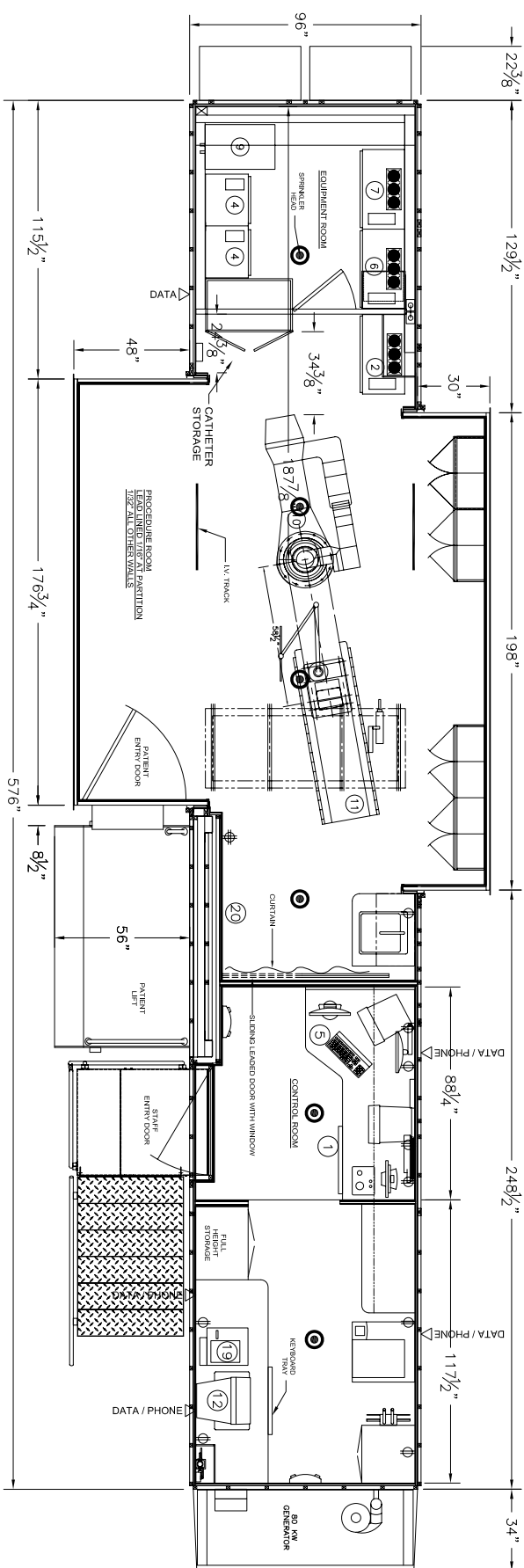


REV.	REV. DATE	CHK. BY	CHK. DATE	ENG.	
06	13JAN03	CLH	13JAN03	DJB	REVISED PER AS-BUILT



21	1	DIAMETER DOSIMETER
20	1	ISOLATED POWER BREAKER PANEL
19	1	LASER PRINTER
18		
17	1	REMOTE CONTROL FOR INJECTOR
16	1	INJECTOR ELECTRONICS
15	1	INJECTOR HEAD ON TABLE RAIL
14	1	OVERHEAD SUSPENSION WITH LEAD GLASS SHIELD
13	1	X1 SUSPENSION WITH 3 MONITORS
12	1	GEANET CARDIAC REVIEW STATION
11	1	OMEGA IV ANGIO TABLE (GEMS)
10	1	LCV+ POSITIONER WITH LEAD GLASS SHIELD (GEMS)
9	1	WATER CHILLER
8	1	STEP DOWN TRANSFORMER
7	1	POSITIONER CABINET
6	1	ADVANTIX-E SYSTEM CABINET (GEMS)
5	1	WIT WORKSTATION
4	1	ADVANTIX VMP 100 GENERATOR (GEMS)
3	1	ADVANTIX OPS CONSOLE (GEMS)
2	1	DLX ELECTRONIC CABINET (GEMS)
1	1	DLX OPERATOR'S CONSOLE (GEMS)
ITEM	QTY	PART NUMBER
DESCRIPTION		

THIS DRAWING IS PROVIDED ON A CONFIDENTIAL BASIS SUBJECT TO RETURN ON DEMAND OF OSHKOSH SPECIALTY VEHICLES ("OSHKOSH"), WHICH REMAINS ANY AND ALL RIGHTS ASSOCIATED WITH IT, AND THE ARTICLE OR ARTICLES IT REPRESENTS. DISCLOSURE, REPRODUCTION OR ALTERATION OF ANY PART OF THIS DRAWING, OR MANUFACTURE, SALE OF THE ARTICLE OR ARTICLES REPRESENTED IS PROHIBITED WITHOUT THE PRIOR WRITTEN AUTHORIZATION OF OSHKOSH. © OSHKOSH SPECIALTY VEHICLES. (unpublished).

SHEET NUMBER:	REFERENCE DRAWING:	TITLE:	DATE:	SCALE:
		GENERAL LAYOUT	04.11.2020	2.00"=1' 0"

8'-3" X 13'-6" X 48'-0" TRAILER


DRAWN BY: 

**JOB#**

**OSHKOSH**

16745 S. LATHROP AVENUE  
LATHROP, IL 60150

CHECKED BY: \_\_\_\_\_

**OSHKOSH**  
  
**OSHKOSH SPECIALTY VEHICLES**

16745 S. LATHROP AVENUE  
 HARVEY, IL 60426  
 PHONE: (708) 596-0066  
 FAX: (708) 596-2480

CHECKED BY: \_\_\_\_\_  
 DRAWING NUMBER: 10109-AD1