



**KENTUCKY TRAILER**

A Marmon | Berkshire Hathaway Company



# Kentucky Trailer Truck Bodies

The  
Truck Body  
that works  
as hard as  
you do!



## KENTUCKY TRAILER

A Marmon | Berkshire Hathaway Company

**All Kentucky Trailer products, truck bodies and trailers, come with 5-year structural warranty standard**

**All Kentucky Trailer products, truck bodies and trailers, are water tested after production, ensuring your customer's products stay dry**

**Oversized Cast Aluminum Corner Caps designed for both strength and repairability**

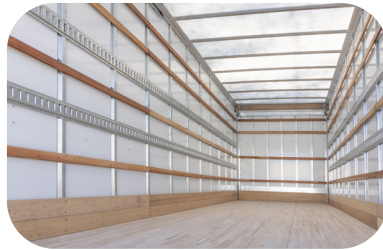
### Aluminum Freight Body

- ▶ Our most customizable freight body model – don't be afraid to ask!
- ▶ Composite exterior front wall for improved strength and forklift protection
- ▶ Front corner and radius designed for durability and easy repairability
- ▶ Fully hot-dip galvanized subframe standard
- ▶ Stainless steel rear frame standard
- ▶ Multiple side door options available
- ▶ Interior light options – including our full length LED strip lights



### Composite Body

- ▶ Industry leading 6mm composite panels with bonded shiplap seams for superior durability and cleaner graphics
- ▶ Custom color options available
- ▶ Front corner and radius designed for durability and easy repairability
- ▶ Fully hot-dip galvanized subframe standard
- ▶ Stainless steel rear frame standard
- ▶ Interior light options – including our full length LED strip lights
- ▶ Multiple interior scuff, track, and z-post configurations available



### Moving & Storage Body

- ▶ Built with the same design as our furniture van – trusted by generations of movers
- ▶ Standard with options professional movers expect, including lowest bed height, finished floor, full length LED strip lights, walkboard rack, and skirting
- ▶ Purpose-built attic design – not an afterthought! Rated for 1,000lbs evenly distributed
- ▶ Stainless steel rear frame with oversized light panel and rear impact guard – designed for safety and longevity
- ▶ Recessed side door hardware designed for both durability and clean graphics
- ▶ Custom door configurations – door sizes options range from 48" W to over 100" W + industry leading door opening height
- ▶ Optional lift-gates with integrated bed extensions – flush entry with swing rear doors for movers



A Marmon |  
Berkshire Hathaway  
Company

**Kentucky Trailer and  
Truck Body Manufacturing**

7070 International Drive  
Louisville, KY 40258  
(502) 637-2551

**kytrailer.com**